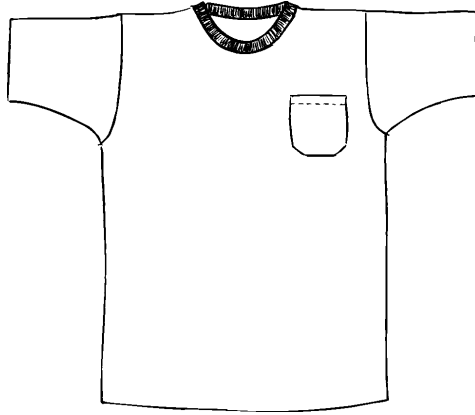


5190
Hanes
Beefy-T w/ Pocket



Description

- *100% cotton, 6.1 ounce
- *Ring spun yarn
- *17 singles
- *Taped shoulder to shoulder
- *Coverseamed neck
- *Double needle sleeve, neck and bottom hem
- *Embroidery or screenprinting okay

Finished Garment Measurements

Size	S	M	L	XL	2XL	3XL
Width	18	20	22	24	26	28
Length	28	29	30	31	31.5	32
Sleeve Length	9	9.25	8 ³ / ₄	9 ¹ / ₄	9 ³ / ₄	10
Shoulder Width	16 ³ / ₄	18 ³ / ₄	20 ³ / ₄	22 ³ / ₄	24 ³ / ₄	25
Pocket from Shoulder	8 ³ / ₄	9 ¹ / ₄	9 ¹ / ₄	9 ¹ / ₄	9 ¹ / ₄	9.5
Pocket Center	2 ¹ / ₄	2 ¹ / ₂	2 ³ / ₄	3	3 ¹ / ₄	3 ¹ / ₂